

CERTIFICATE OF LOCATION OF GOVERNMENT CORNER

SOUTHWEST Corner of Section 18, Township 106, Range 43, 5TH P.M.

STATE OF MINNESOTA, County of MURRAY

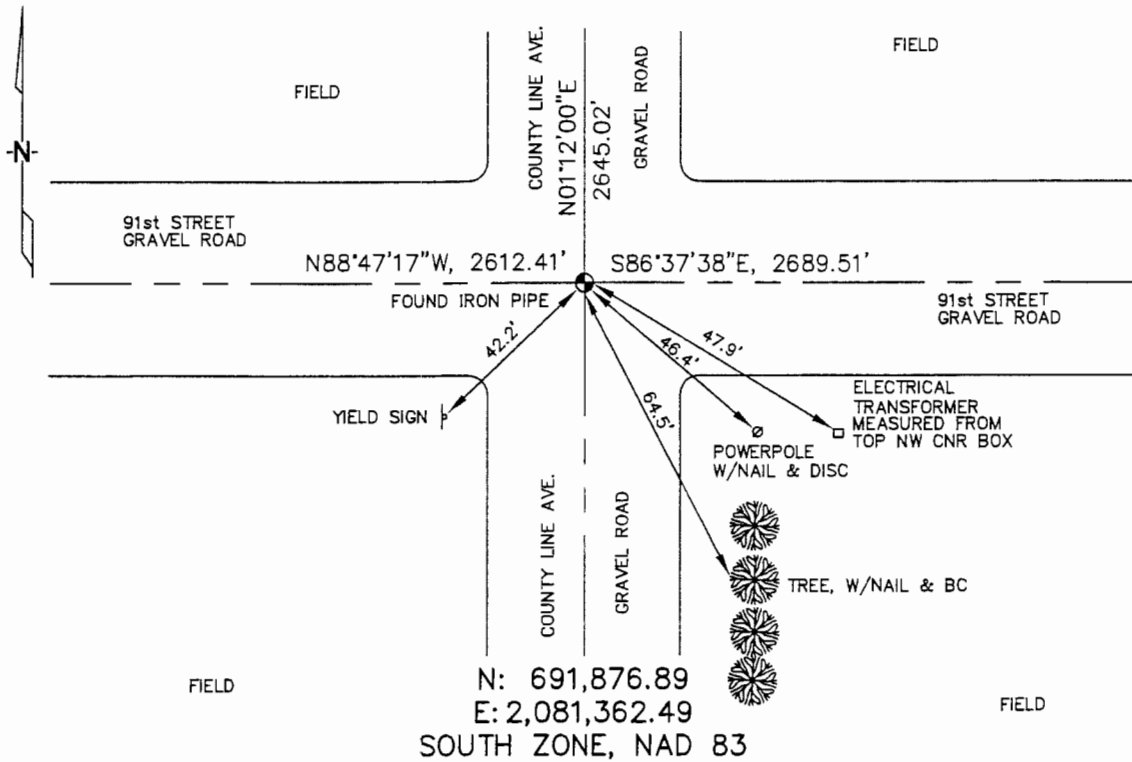
At the corner location shown on the sketch :

On 3/23/2006 found IRON PIPE @ INTERSECTION OF GRAVEL ROADS.

left monument as found, lowered monument, removed monument (explain)

On _____ set _____

Sketch of reference ties



Statement of evidence relative to this corner location is on back page

I hereby certify that this document and the data contained herein was prepared by me or under my direct supervision.

James V. Zeff Signature 9/27/06 Date

Registration No. 44563
 Land Surveyor, Professional Engineer
 County Surveyor, County Engineer

OFFICE OF THE COUNTY RECORDER
 County of _____

SEP 29 2006

I hereby certify that this document was filed in the Co. Recorders office at _____ .M. on the _____ day of _____ A.D., 20

County Recorder James V. Johnson
 By _____, Deputy

DOCUMENT NO. _____

STATEMENT OF EVIDENCE:

SOUTHWEST CORNER, SECTION 18, T. 106 N., R. 43 W.,
MURRAY COUNTY, MINNESOTA

1861 J.W. MYERS, U.S. DEPUTY SURVEYOR, MONUMENTED TOWNSHIP LINE.

3/23/2006 ULTEIG ENGINEERS, INC., SURVEY CREW, BRIAN PAYNE--PARTY CHIEF,
FOUND AN IRON PIPE AT THE INTERSECTION OF GRAVEL ROADS.
TIES: SW-42.2' TO POST FOR "YIELD" SIGN;
SE-47.9' TP TOP, NW CORNER OF ELECTRIC TRANSFORMER BOX;
SE-46.4' TO NAIL & DISC ON SIDE OF POWER POLE;
SE-64.5' TO NAIL & DISC ON SIDE OF TREE;
N-2645.02' TO WEST 1/4 CORNER, SECTION 18;
E-2689.51' TO SOUTH 1/4 CORNER, SECTION 18;
W-2612.41' TO SOUTH 1/4 CORNER, SECTION 13, RANGE 44.